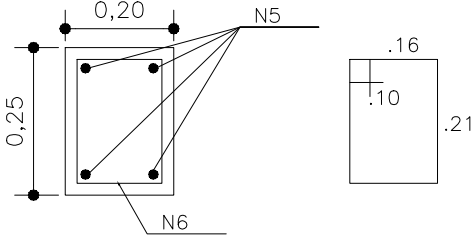
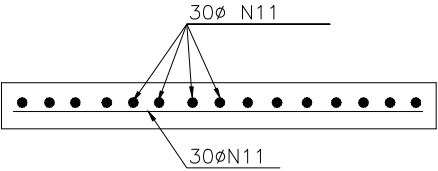
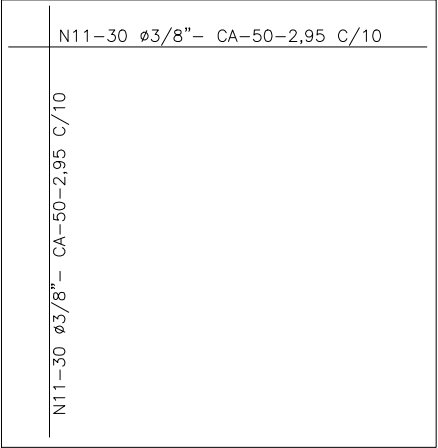
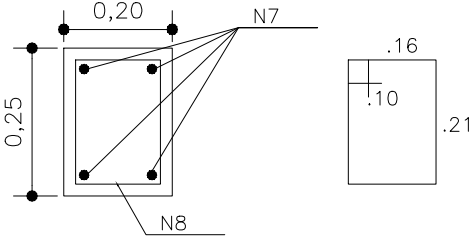


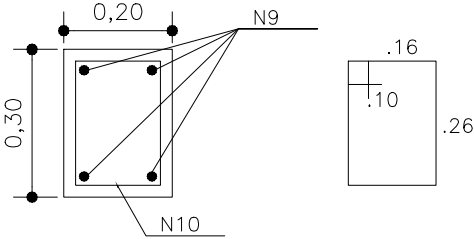
LAJE EM CONCRETO ARMADO
BASE DA CAIXA D'ÁGUA



N5-4Ø3/8"CA50-2.95(x4)
N6-18Ø4.2"CA60-0,84 C/15(x4)
VIGAS (V1,V2,V3,V4)



N7-4Ø3/8"CA50-2.95(x4)
N8-18Ø4.2"CA60-0,84 C/15(x4)
VIGAS (V5,V6,V7,V8)



N9-5Ø3/8"CA50-2.95(x4)
N10-18Ø4.2"CA60-0,84 C/15(x4)
VIGAS (V9,V10,V11,V12)

SISTEMA DE ABASTECIMENTO DE AGUA

PROJETO: DETALHE DA TORRE DE SUSTENTAÇÃO DO RESERVATÓRIO

TITULO: DETALHE (LAJES E VIGAS)

PREFEITURA MUNICIPAL DE PENALVA-MA

DATA:

LOCALIDADE:

ESCALA:
S/ESC